



Digital Volumetric Processing Using High Performance Computing

Tom Kurfess
Roby Lynn

Tommy Tucker
Pedro Urbina

Chris Saldana
Clayton Greer

Georgia Institute of Technology / Tucker Innovations / Tecnológico de
Monterrey

North American Research Conference
Blue Sky Competition
June 6, 2017

TIME

Analog

Digital

Compressed

Distributed

AI

1D: Sound



1982



1991



1999



2008



Digital Signal Processing

2D: Image



1987



1992



1997

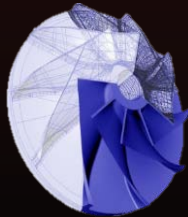


2017



Digital Image Processing

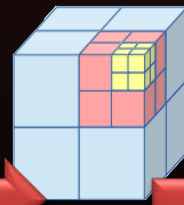
3D: Volume



1987



2013



2016



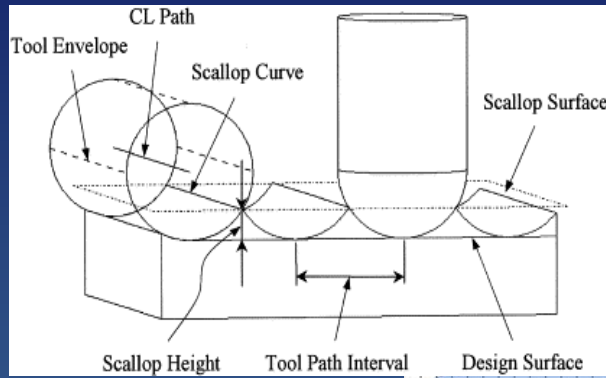
201x



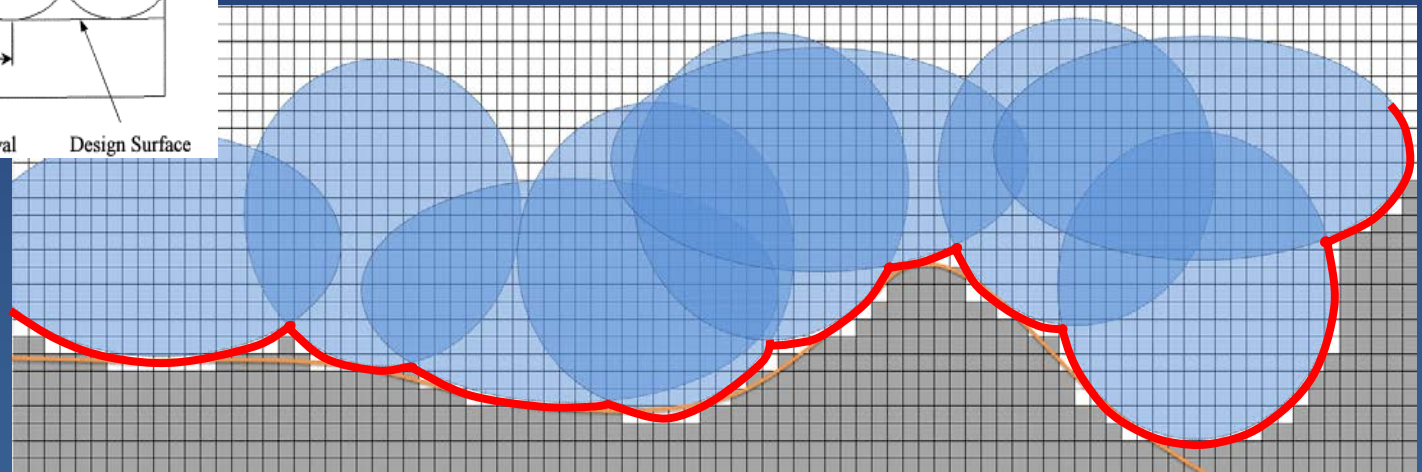
Digital Volumetric Processing (DVP)

DVP and Machining (aka Subtractive)

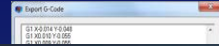
Analog Approach



Digital Approach



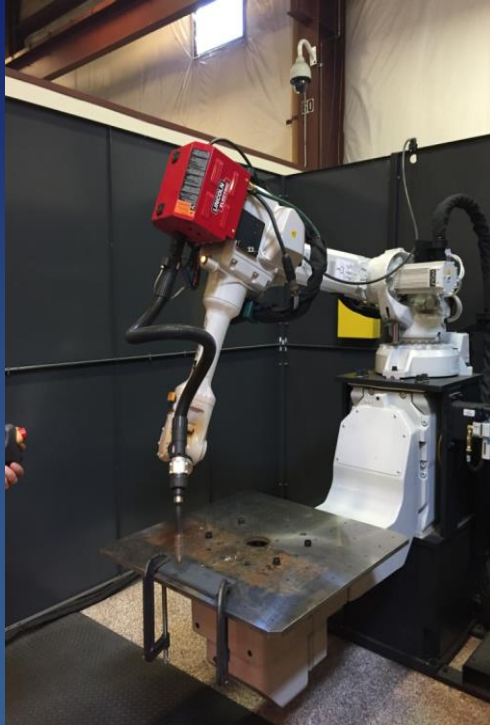
DVP – Enabling WYSIWYG MFG



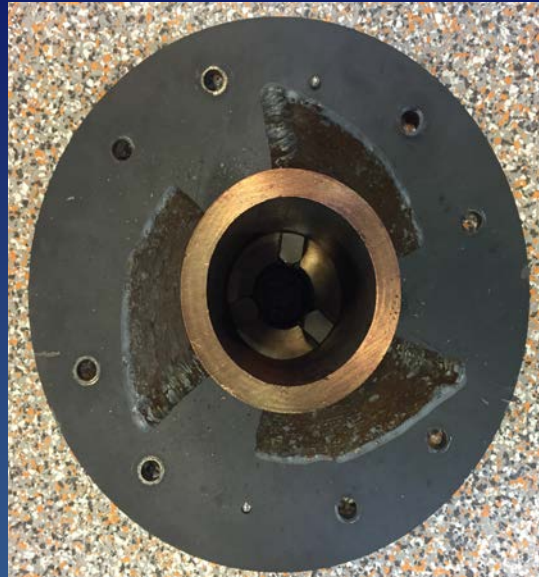
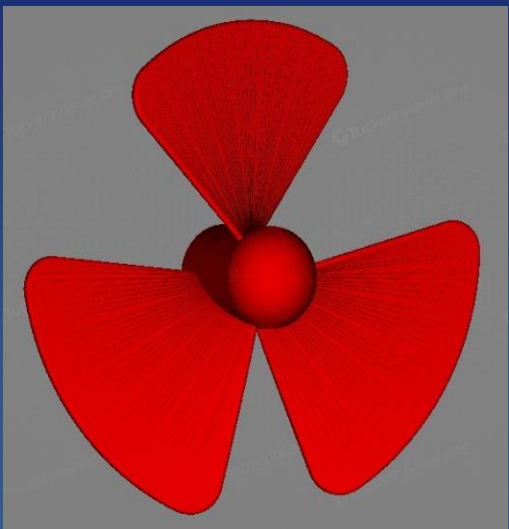
By the way, It works for Additive Manufacturing as well



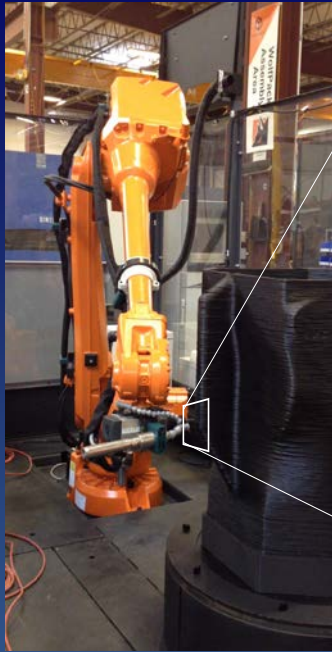
Gravity – It's not just a Recommendation, It's the Law



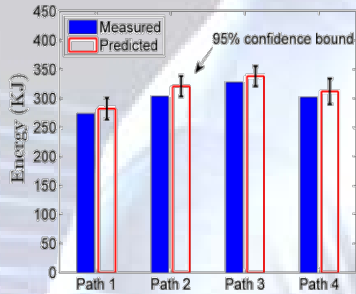
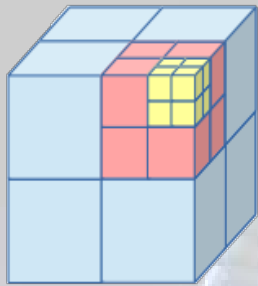
Breaking the Law – Thinking Outside the Parallelepiped



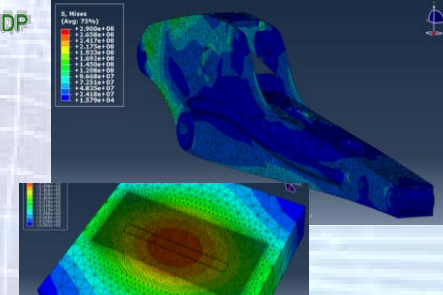
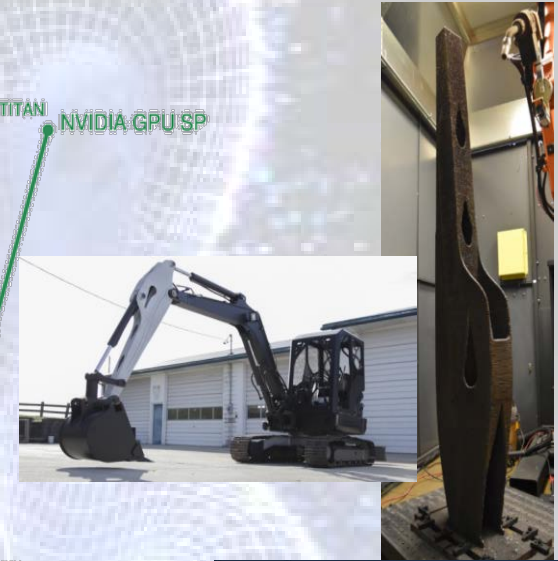
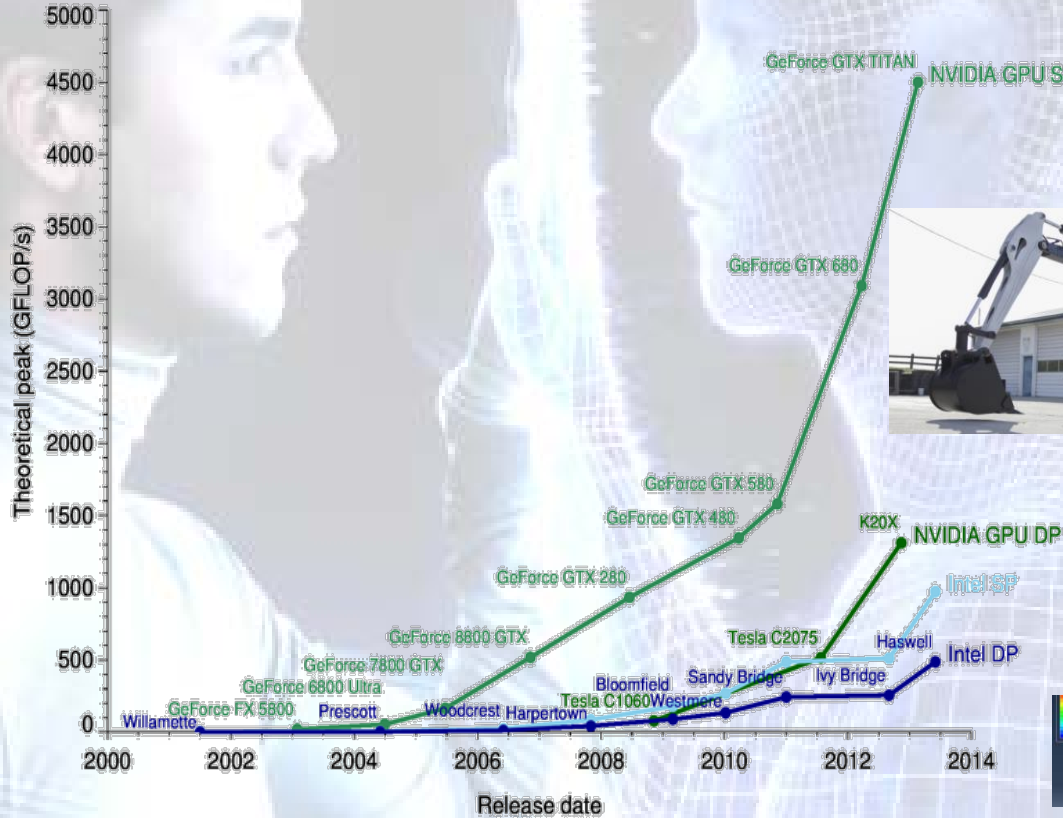
Thinking Big



The Digital Twin – Simply Taking on Moore's Law



Dornfeld, et. al, 2017



Let's Rent a few Tens of Thousands of Cores



Available as of September 30, 2016
GPUs are 2 generations behind

The screenshot shows the AWS EC2 Instance Pricing page for GPU instances. The table lists various instance types with their respective specifications and prices. The 'g2.8xlarge' instance is highlighted with a black box, and an orange arrow points from the text 'Available as of November 10, 2010' to it.

GPU Instances - Current Generation						
p2.xlarge	4	12	61	EBS Only		\$0.9 per Hour
p2.8xlarge	32	94	488	EBS Only		\$7.2 per Hour
p2.16xlarge	64	188	732	EBS Only		\$14.4 per Hour
g2.2xlarge	8	26	15	60 SSD		\$0.65 per Hour
g2.8xlarge	32	104	60	2 x 120 SSD		\$2.6 per Hour



Available as of November 10, 2010
GPUs are 4 generations behind



Google Compute Engine

You Want it When?

GPU Instances

p2.xlarge \$0.9 per Hour

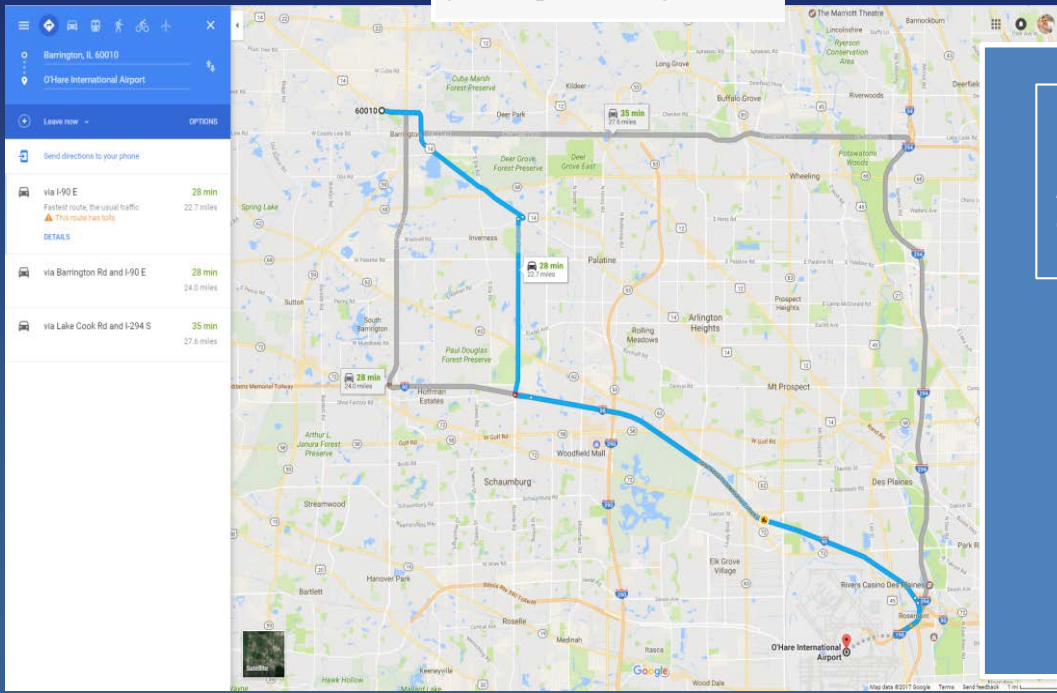
p2.8xlarge \$7.2 per Hour

p2.16xlarge \$14.4 per Hour

2.66 hours X \$0.9/hour

(2.66 hours / 8) X \$7.2/hour

(2.66 hours / 16) X \$14.4/hour



1 GPU- \$2.40 **Purchase**
2 hours 40 minutes
7:29 pm Completion

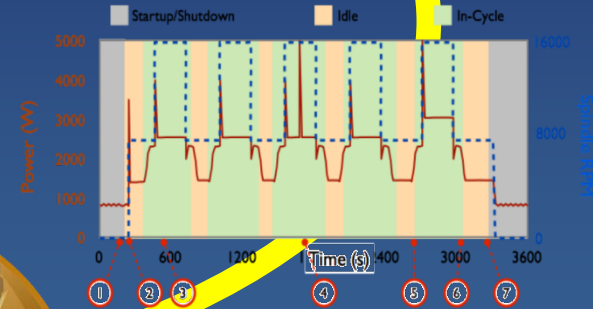
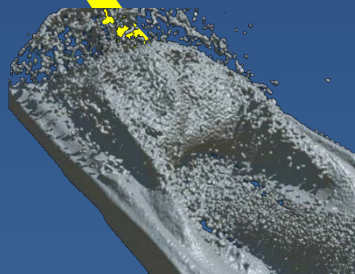
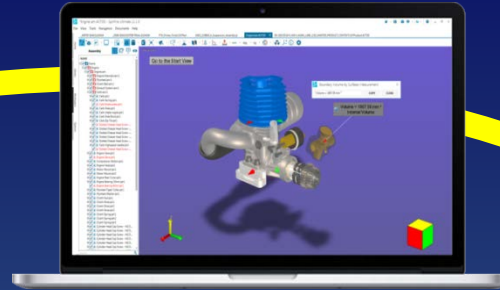
8 GPU- \$2.76 **Purchase**
23 minutes
4:50 pm Completion

16 GPU- \$2.88 **Purchase**
12 minutes
4:39 pm Completion

DVP & Education – Virtually There



DVP – Morphing Makers to Manufacturers



Dornfeld, et. al, 2010

